

LucidShape Lit Appearance

#01 -1

2019



Author

Peter Sommer



Abstract

Lit Appearance

cell size, range iscon uze

Display Light

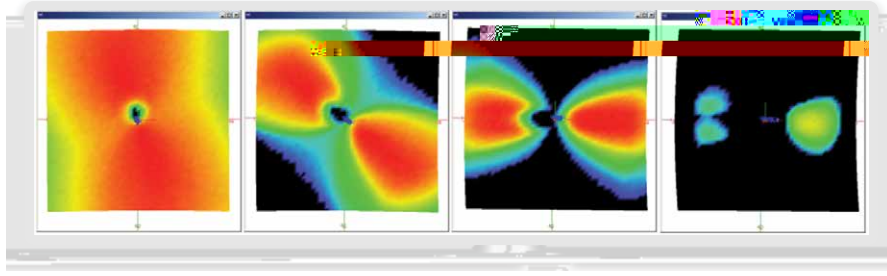


Figure 5. Variation of the LIT Appearance with slightly tilted reflector positions

Surface Display



Figure 6. Surface Display Property dialog box

surface data display type, surface color, surface color shine

Luminance Image from Sensor Light

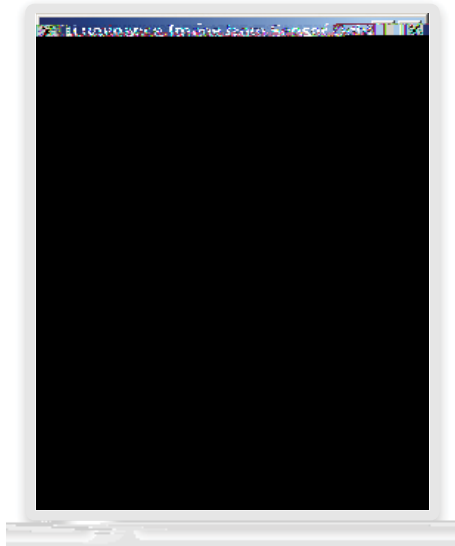


Figure 8. Luminance image from Sensor Light dialog box



Figure 9. Luminance image of the reflector's light distribution (front view) in the UV data view

surface color

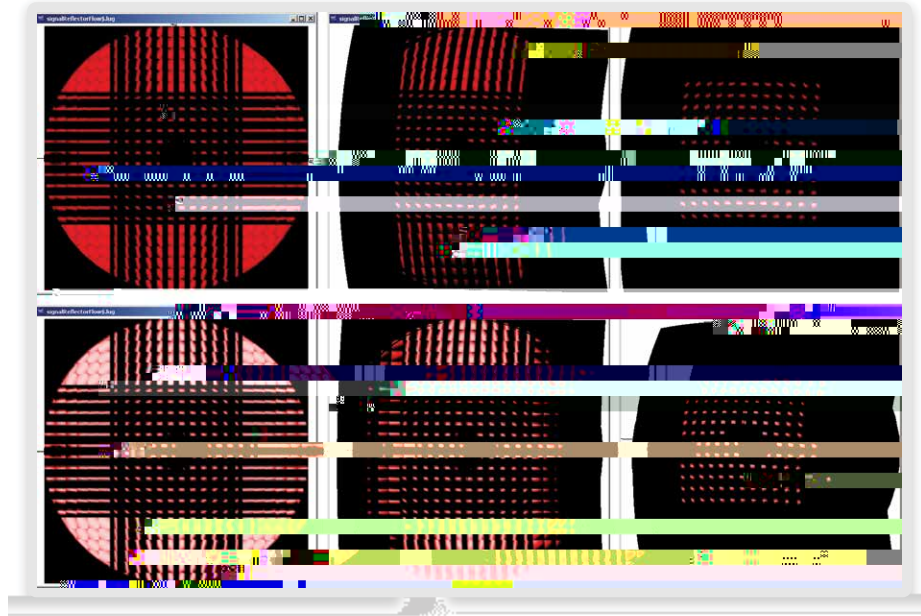


Figure 10. Luminance image of the reflector's light distribution (front view) in the UV Data View

3. The results of the simulation are shown in the figure below. The results show that the light distribution is not uniform and there are some areas of high intensity and some areas of low intensity. This is due to the geometry of the reflector and the position of the light source.

Conclusion

The results of the simulation show that the light distribution is not uniform and there are some areas of high intensity and some areas of low intensity. This is due to the geometry of the reflector and the position of the light source.