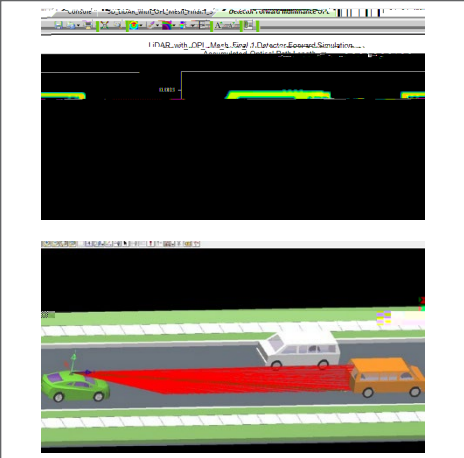
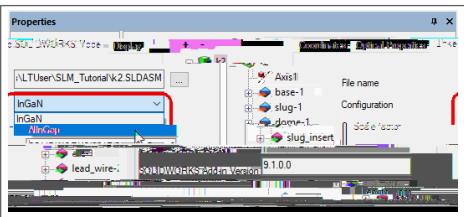
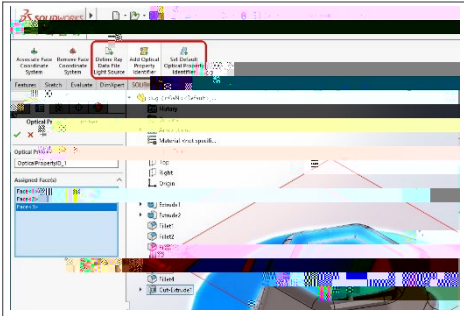


LightTools 9.1



LiDAR (time-of-flight)

(overlapping beams)

LightTools

BDC /T2 1 Tf 0 Tc 0 Tw ()Tj 0.002 Tc 0.001 Tw 9.289 0 Td [(L)-1.2 (iD)-1.8 (A)-0.6 (R)2.4 (l)6.8 (L)-1.3 (ig)3.7 (h)-3.4

(mica)

(topaz)

(DSIM)

LightTools

Forward

Backward