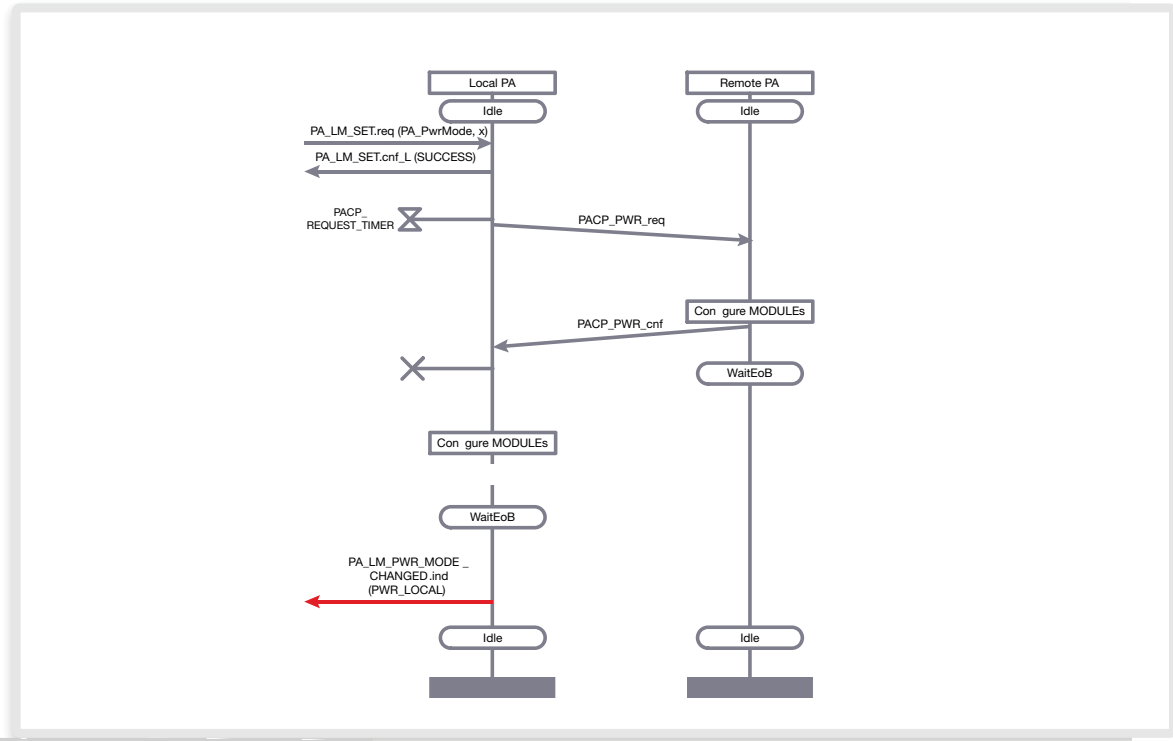
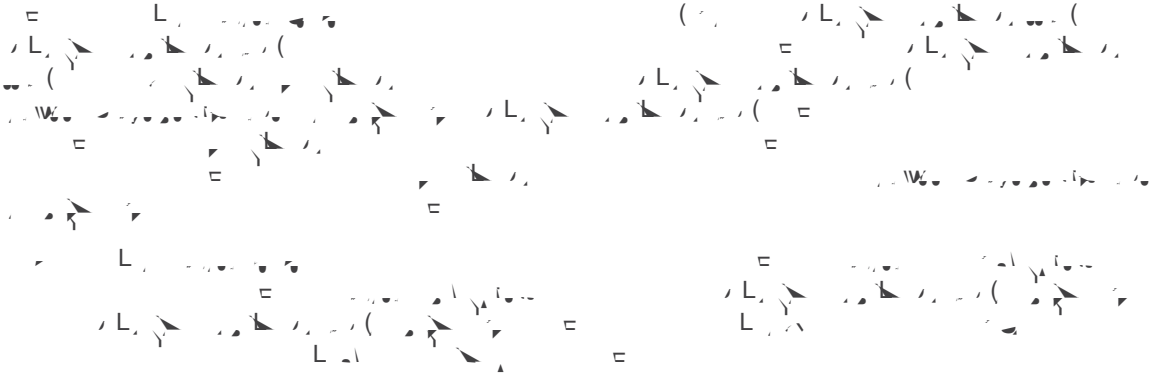


JEDEC UFS MIPI UniPro MIPI M-PHY

l, /, =
= = 1 =
▶ = (



UFS

- ▶ $\int_{-\infty}^{\infty} \delta(x) dx = 1$
- ▶ $\int_{-\infty}^{\infty} \delta(x) f(x) dx = f(0)$
- ▶ $\int_{-\infty}^{\infty} \delta(x) dx = 1$

